



Central Jersey Orchid Society Newsletter

May 2020 Issue

President's Message May 2020

Since our last CJOS meeting on March 4 the world has turned upside down. The tragedy of COVID-19 for America and the world has exploded in the past month on an almost logarithmic scale. I personally had never contemplated that I would experience a pandemic on this scale in my lifetime. Especially as a physician, my heart and prayers goes out to the health care workers on the front lines. It is up to all of us to "flatten the curve".

During these weeks and likely months of isolation from friends and family, our orchids will be a source of enjoyment and pleasure. All of us will have more time to pamper our plants. Hopefully your care will lead to happier and healthier orchids over the upcoming months. I have taken more plants than usual in bloom from the greenhouse and placed them all over our home. Just looking at them makes Joan and me smile. I have received emails and calls from members just wanting to be in contact and discuss their orchids.

As mentioned in an email I sent out recently, we have no idea when our next CJOS meeting might happen. It is certainly possible that we may not have a get together until fall. The CJOS crisis now seems so insignificant in comparison to the current pandemic. There has been a conference call to discuss the modifications of the bylaws. Sometime in the near future the revisions will be sent out to everybody. Clearly I will be serving as your president for longer than I had anticipated. Ed will be sending out monthly newsletters. **Please continue to send him images of your orchids so we can have a virtual show table.**

It is Joan's and my hope that you and everyone in your families stay healthy.

Editors note: Please think about helping our fellow orchid growers and suppliers. Check with other CJOS members to get their insights of their experience with growers that they have purchased plants and supplies.

A sample of AOS Facebook Page. Please go to their facebook page and "like it"



Newsletter Contents

Page 2 Meetings and Committees

Pages 3-12 Members Virtual Show Table

Page 13 AOS Facebook Page

Page 14- AOS Webinars

Page 15-21 Reprint CJOS Newsletter May 1987

Meetings and Events 2019-2020

Meetings, 7:00pm, are held the first Wednesday of the month at the at the Johnson Education Center (D&R Greenway Land Trust) One Preservation Place Princeton, NJ 08540

Sept: Ed Weber: Topic TBA

Oct Wayne Hollenbach Topic TBA

Nov: Richard Ho: Mounting orchids and their Care.

Dec: Holiday Party

Jan: David Off of Waldor Orchids

Feb: Bayard Saraduke

March: David Rosenfeld **WHO WERE THESE GUYS: 19TH CENTURY ORCHID PERSONALITIES.**

Apr: Meeting Canceled: D&R Greenway Building Closed

Event will be rescheduled if possible - Potting party / panel discussion.

May: ?

June: ?

Officers and Committee's:

President -David Rosenfeld
orchiddoc@comcast.net

Vice President -TBA

Treasurer/Secretary -Anne Skalka
anne@skalkacpa.com

Refresments – Joy Gabriel
joy.a.gabriel76@gmail.com

Editor Newsletter- Ed Frankel
Edsharkf@yahoo.com

Members Show Table

George Guzikowski



C. Picasso Modren Art

C.Trianae fmatipo X Self



BLC. Triumpna Coronation



LC Bryan wheeler grandson



LC. Dennis olives x epc. Kyoguchi



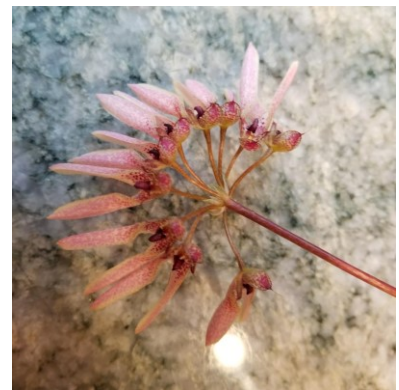
Anne Skalka

Alcra Donald Halliday



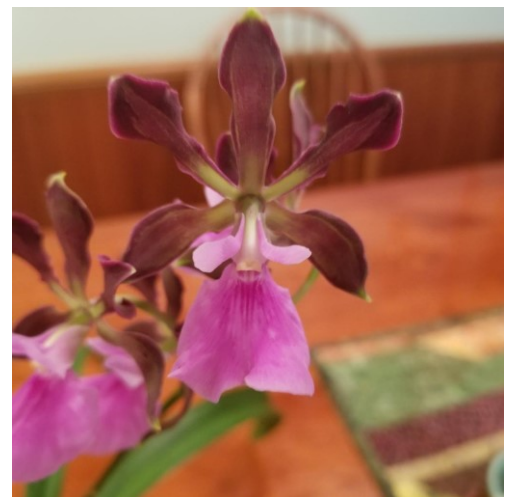
**Bulb. weberii x
Davis Thoms and
Lepotes bicolor**

bulbophyllum weberii



C. skinneri

Epi. Randii



Slc Hsin Buu Lady

Jaymie Santiago

Blc Tropical Pointer Cheetah AM AOS



**Brassocattleya Waiane Leopard
Ching Hua
HCC AOS**



Cattleya intermedia var Orlata



Cookara Bill



**Iwanagara
Appleblossom**



Masdevallia Gypsy



Slc Bella del Caribe



**Slc Circle of Life Hot Pants
AM AOS**



Jeff Tryon



**Ascocenda Fuchs
Joy x Yip Sum Wah**

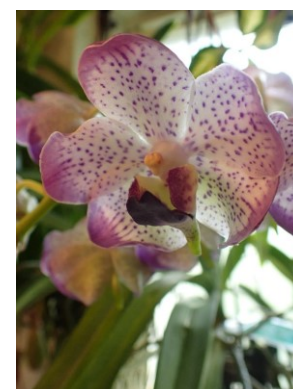


**Phalaenopsis
Sogo Vivien
Golden Leaves**



Dendrobium micro chip

Vanda_ black magic



**Vanda
Gordon Dillon x Aerides
Lawrencea**

Joseph Thomas



Dend. amethystoglossum



Mokara Chao prays boy blue



Paph. hitsutissimum

Luann Larico

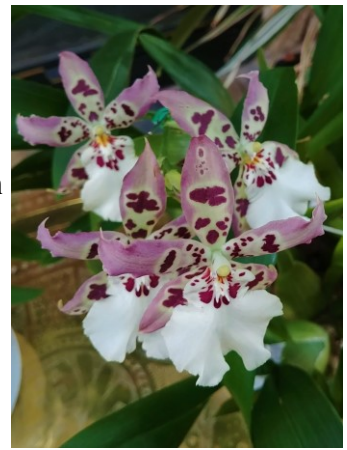


**Dendrobium
kingianum**

Bak Cotton Candy Clownish



Gct Renate



Iwan Appleblossom



Lc Fire Dance 4-4-20

David and Joan Rosenfeld



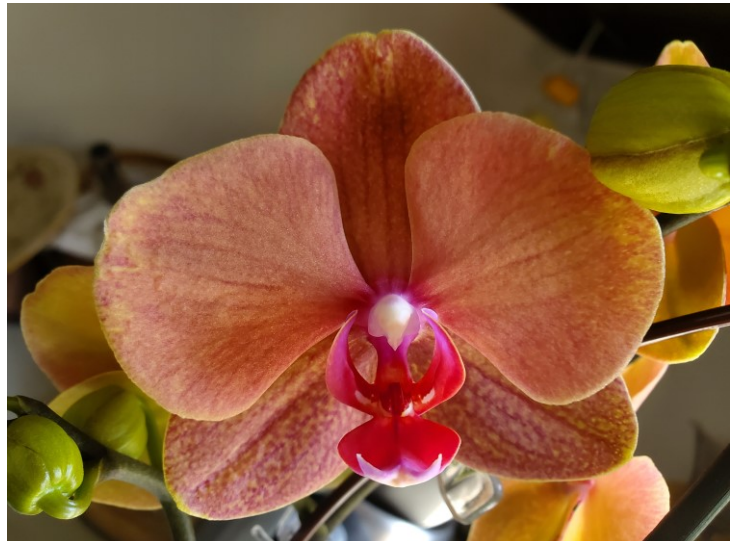
Lycaste Dainty
(campbellii 'Shan' x candida)

Lycaste Hawaiian Lass
(lasioglossa v. rosea 'Coolness'
x Gratrixiae
'Flowering JEM')

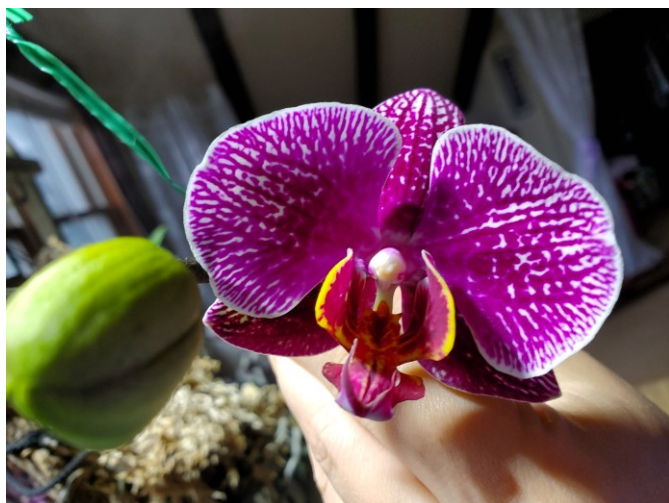


Mps. Joan Rosenfeld
(HO x RR) ' David's 70th'
HCC 79 pts

Rachel Lemcke



Doritaenopsis Leopard Prince



Ed and Pam Frankel



Jewel Box dark waters

Love Castle 'kurenai'



Burana Beauty 'Burana' HCC/AOS



**Pot Dream Circle
'Lone Jack' AM/AOS
x Pot California Queen 'Red
Angel' Potting Party Plant**

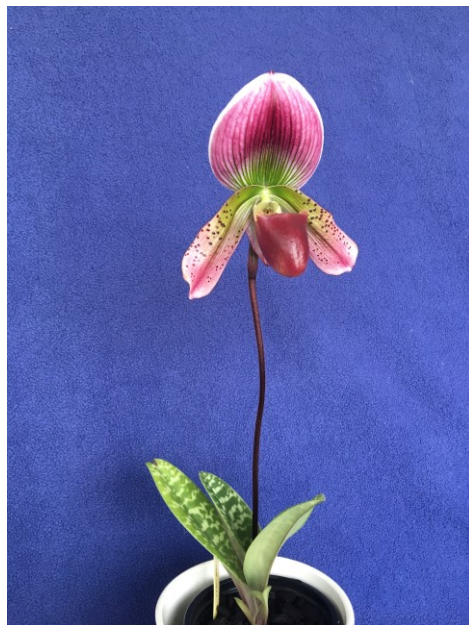
**Rhyncholaelia
Digbyana**



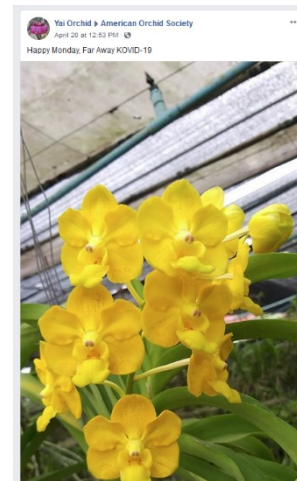
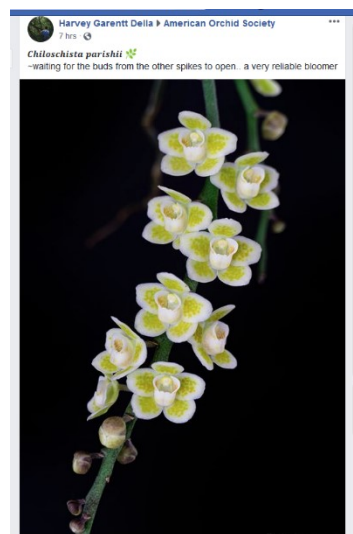
**Pot Angels dream
HCC/AOS x slc Mem. Trudi Marsh
'sun flare'**



John Bryan



Join AOS Facebook Page Here is a sample of some of the flowers posted



American Orchid Society



Upcoming AOS Webinars



Greenhouse Chat May 2020

Ron McHatton



Tuesday, May 12th, 2020
8:30pm EDT

Orchid Q&A



Australian Dendrobiums with Fred Clarke

Fred Clarke



Thursday, May 21st, 2020
8:30pm EDT

Orchid Q&A



Greenhouse Chat June 2020

Ron McHatton



Tuesday, June 16th, 2020
8:30pm EDT

Orchid Q&A

Please support the American Orchid Society (AOS)
Become a member there are so many benefits and you are supporting
a great cause.

JOIN at AOS.ORG
Go to their website and see all the valuable information the Society
provides

How Do You Grow?

Each month, I would like to show a member's growing methods/conditions.
We started with ours. Please send me pictures of your growing conditions
(summer/winter) edsharkf@yahoo.com No submission this month. Let's get
some pictures of your growing space

Here is an old May 1987 CJOS Newsletter. Still has good info and gives you an idea about the Society 33 years ago

Some members may recognize a few names that were prominent members that are no longer with us. We miss them

CJOS NEWSLETTER -- MAY 1987

(The newsletter is edited by Smith Freeman and distributed by Pat Venable. Material for publication should be submitted two weeks preceding the monthly meeting date.)

Contents

page

1. - Next Year's Programs
2. - Some Recollections of Lee Soule's Talk on Oncidiums
3. - The Six Seasons of Orchid Growing
5. - The Secretary's Report
6. - The President's Message
7. - From the Librarian

Orchid Calendar -- Spring 1987 (* marks CJOS meetings)	
* Annual Banquet Meeting -----	May 27 (4th Wed.)
* AOS Slide Show, "Orchid Ailments and Their Treatment" -----	June 24 (4th Wed.)
* AOS Slide Show, "Some AOS Awards - Phalaenopsis" -----	July 22 (4th Wed.)
* AOS Slide Show, "Orchids of Guatemala" -----	Aug 26 (4th Wed.)

The CJOS meets at the main branch of the Mercer County Library at Alt. US 1 and Darrah Lane in Lawrenceville. Meetings are regularly scheduled for the third Wednesday of each month except for November and December for which the date is moved up one week to avoid conflict with the holiday season. Plant table setup is at 7:30, with the main program beginning at 8:00 PM.

Officers: President: Ed Frankel 609-883-4378
Veep and Newsletter Ed: Smith Freeman 609-924-4921
Secretary and Newsletter Ed: Pat Venable 609-896-1084
Treasurer: Joan Rosenfeld 609-924-2337
Librarian: Chantal McCarroll 609-896-0392

Next Year's Programs

Now is the time to make suggestions for next year's programs. Lee Soule has accepted our invitation to speak in April of '88, but the topic is still open. Other speakers will be invited within the next month or so. Communicate suggestions to Smith Freeman. Newsletter articles are also needed. If you are interested in writing one or would like to suggest a topic of interest for someone else to write about, let Smith know.

Some Recollections of Lee Soule's Talk on Oncidiums

1. Oncidiums species are generally single-season bloomers, adapted to climatic conditions that include a marked wet and dry season. They should generally be grown relatively dry during the (winter) season when they are not in active growth.
2. In many respects, their cultural requirements are the opposite of those for Phalaenopsis. Growing both well in a mixed collection is a challenge. Oncidiums need to dry out between waterings; they do not like consistently high humidity; they usually have an inactive period when watering and temperature should be reduced; and they benefit greatly from vigorous air-movement.
3. The genus "Oncidium" actually includes sections that are not closely related -- often, they are not even interfertile. (Onc. ampliatum, one of the most attractive of the yellow-flowered species, has never been successfully crossed with anything. The equitants are not interfertile with most of the other sections.) When crosses between these radically different groups can be made at all, they are often infertile. (Onc. Midas, an attractive, large-flowered, yellow-with-red-speckles cross between onustum and an equitant, is an example of this.) Crosses between parent species with different blooming seasons may bloom in both parents' seasons - i.e., more than once a year. Crosses between plants with very different growth or flowering habits may be "confused" about how to grow or flower (with unappealing results.) Crosses with any yellow Oncidium are generally yellow unto the fourth generation. Crosses between reds and yellows give "mud." Small flowers are dominant over large.
4. Terete (pencil-shaped) leaves are an adaptation to minimize water-loss. They are very sensitive to burning if light intensity is too high. It is not necessarily true that they are tolerant of being dried out too much. Most Oncidiums tolerate rather high light levels: 4000-8000 foot candles, comparable to full direct sun in the winter-time. Reddening of the foliage is a danger sign. The ideal light level gives just a hint of red in the leaves.
5. The culture of the equitants differs from that of most other sections. They tolerate lower light levels, and burn easily if it is too bright. They do not like extreme temperature fluctuations. In nature, they get much of their water from dew. They should never be watered on a cloudy day when they cannot dry out quickly. They are subject to scale which may be invisible in the leaf axils. Infested leaves turn brown at the base and come out when pulled. Equitants are subject to damage from insecticides that are emulsified in hydrocarbon solvents -- the dry, powdered form should be used instead.
6. Most Oncidiums are adapted to life high in trees where they are subject to strong air movement. They are wetted frequently, but dry out quickly. They have vigorous and extensive root systems. In cultivation, high air movement stimulates root growth; it also helps insure quick drying. Oncidiums should be potted in an open mix -- coarse for thick rooted varieties, finer for thin-rooted forms. Clay pots are best for this group. It is normal for some of the roots to escape from the pot and wander around. If their environment is good, they will have long green root-tips. If plagued, it is possible to tell whether the plant likes the material of the plaque by pulling on the plant. If it likes the plaque it will hold on too tightly to be detached without tearing the plant, otherwise it will pop right off. Cork is suitable for most oncidiums, but sassafras, if available, is even better. Air movement can also provide a 10° or greater cooling effect, especially if the plant has been recently watered.

7. Among the species mentioned were
- calochilum - small, fragrant, hard, grow dry
 - cheiroporum - compact, yellow, recommended
 - lanceanum - fragrant, partly purple, sometimes tricky
 - aurissanorum - white, easy to grow
 - henekenii - ugly and hard to grow, but breeds red hybrids
 - papilio - tolerates lower light, sometimes tricky
 - limminghei - likewise low light
 - stacyi - tricky
 - myrax - tiny, floriferous
 - longipes - compact, recommended
 - bifolium - recommended
 - onustum - recommended, grow quite dry
 - crispum and allies - recommended, not hard (!)
8. Oncidiums can be repotted any time they are in active growth. They should not be disturbed when dormant. It is a good idea to repot an Oncidium that is not doing well.

The Six Seasons of Orchid Growing

It seems to me that the conventional four seasons do not correspond very closely to the periods when special cultural problems prevail in the orchid growing world. Instead, I think there are six seasons -- and when the season changes you should be prepared to modify your cultural practices to adapt to the changed problems and opportunities. Of course, not everyone's growing area will be equally sensitive to the seasonal changes. A large, highly automated greenhouse or a light table would presumably be of minimum sensitivity and a small greenhouse or a windowsill of maximum sensitivity.

The following are my suggestions for the six seasons. I would welcome alternative suggestions for the names of the two new seasons. One could also argue as to how to group the different months together, since changes are actually continuous rather than abrupt.

Winter - January and February: Poor light and low temperatures. Light is poor because the days are short and the sun never gets very high. The direct sun, when it shines, is very much from the south. Because it is at a low angle, more gets through a vertical windowpane than a greenhouse roof. But the greenhouse has the advantage of skylight which is especially important under these circumstances. The ideal arrangement of plants would be hanging on a south facing wall. Temperatures are often very low and indoor humidity is at its minimum. Warmth loving plants are stressed, especially those that need high light.

Spring - March and April: Rapidly changing light and moderately cold temperatures. Over the year, our day length varies by about 6 hrs and 40 minutes, from a minimum of 8 hrs and 40 minutes to a maximum of 15 hrs and 20 minutes. Half that yearly change occurs during the two months that bracket the spring equinox, March and April. The indoor environment during this period is more moderate, warmer and more humid, than in winter. This is the peak blooming season, but be aware of the rapidly increasing light, especially in east and west facing windows.

Puzzle - May and June: Maximum light and very variable temperatures. I thought of calling this one "Peak" because of the high light, or "Pendulum" to match the "Pit." For a windowsill grower, this season is indeed a puzzle because night temperatures outside may still often be low enough to cause severe stress, but day temperatures indoors (or in a greenhouse) can also be high enough to cause stress when combined with the high light. The light is higher during this season than any other because the foliage of deciduous trees is sparse till near the end of the period. Direct sun comes more from the east and west (for a windowsill grower). It can be dangerously bright. South light comes from nearer the zenith, which is very effective for a greenhouse, but the light zone for a south window actually narrows. Both windowsill and greenhouse growers should make sure of adequate shading. In the past, we tried to cope with this period by moving the plants outside as early as possible and covering them with plastic or moving them into the garage when frost threatened. However, the night temperatures were still low enough to slow down growth by giving plants accustomed to more moderate indoor conditions the wrong signals. This year we are going to leave them inside longer but improve ventilation (open windows and turn on fans) to keep the plants from overheating. (Overheating kills plants -- as we have discovered the hard way in past years. Thermal stress can lead to disease even without burned leaves or other signs of sun damage.)

Summer - July and August: high light and high temperatures. This is the true outdoor season for orchids. Light is intense, and the sun shines at moderate angles from east and west as well as being nearly overhead in the south near midday. High day temperatures decrease the tolerance of even light-loving plants for direct sun. Heat intolerant plants (Odontoglossums, Sophronitis, Masdevallias, among others) need heavy shade and may also suffer from the high night-time temperatures. (This is when J & L has its annual sale -- it is also the worst time of year to buy cool-loving plants.)

Fall - September and October: Rapidly changing light and moderate outdoor temperatures. Even though light frosts can occur during the latter parts of this period, it is still a time of mainly good outdoor growing conditions, especially for nobile Dendrobiums, sophro Cattleyas, Cymbidiums and other cool-tolerant orchids. Because dry plants better withstand low temperatures, it is essential to protect them from too much rain, especially late in the day. Warmth loving orchids like Phalaenopsis should be indoors, but good ventilation will be needed since hot days are still common even though some nights are cool. In terms of day length, this period matches "Spring", but actual light intensities are generally much lower because deciduous trees still have all their leaves. This is a tricky period and may best be handled by the small grower who is willing to cart his plants in and outdoors to make best use of the weather.

Pit - November and December: poor light and inconsistently low temperatures. The light is as poor during this period as in winter -- maybe even worse because of leaves persisting on the trees till nearly Thanksgiving. Temperatures are too low to have the plants outside, but may be warm enough indoors to keep plants active. Combined with poor light, the lack of dormancy can cause weak growth and blasted buds. A lot of luck in when the sun shines is a big help in blooming plants during this period.

The Secretary's Report

The April 22, 1987 meeting of the Central Jersey Orchid Society was opened by President Ed Frankel.

Vice-president Smith Freeman introduced Lee Soule, distinguished grower of mixed species speaking of the genus Oncidium.

The show table was as follows:

BOTANICAL

- 1st - Smith and Natalie Freeman - *Leptotes bicolor*
- 2nd - " " " " - *Laelia regina*
- 3rd - Jean and Joe Kane - *C. skinneri*

ADVANCED HOBBY

- 1st - J. Bobik - *Lc. Jungle Elf*
- 2nd - Sarita and Jack Magray - *Vanda Gordon Dillon X*
- 3rd - J. Bobik - *Vanda (Lim Swee Aunt Waianae Blue)*
- Bestgrown - Joan and Dave Rosenfeld - *Ascofinitia Cherry Blossum*

HOBBY

- 1st - Smith and Natalie Freeman - *Dend. chinsai*
- 2nd - Jack Gorelick - *Angulocaste Olympus 'Chadds Ford'*
- 3rd - George Guzikowski - *Odontoglossum Pagan Love Song X*

BOTANICAL

- 1st - Lisa Ishimuro - *Phal. "David George X Golden Buddha"*
- 2nd - Chris and Carolyn Haines - *Phal. Pink Polka Dot X*
- 3rd - C. Kim - *Slc. Wendy's Valentine*

The membership discussed the annual dinner meeting in May to be held at Goodtime Charlie's in Kingston. It was agreed that each person attending the dinner should receive a small orchid plant. The plant raffle tickets at that meeting will be limited to one ticket per person.

CJOS will donate about \$100 of orchid books to the Lawrence Branch of the Mercer County Library. The library has not charged the society for use of the room for meetings.

The membership would like to buy about \$200 of orchid books for the CJOS library. You should give suggestions of titles to Chantal McCarroll.

The Bentley's will be responsible for September refreshments.

President's Message

As I believe this will be the last newsletter that I will be contributing to as president, I would like to thank everyone for their support for the past two years. I especially appreciated the help by the other officers: Smith Freeman (Smith has provided the group with an outstanding selection of programs, provided the bulk of the material for the newsletters, and together with Natalie participated in every show that the group displayed), Joan Rosenfeld (Joan has coordinated the group's money and membership as treasurer), Pat Venable (Pat has provided the group with the meeting minutes and the distribution of the Newsletter). I would also like to thank the other members for their help with the other functions necessary to keep the group going. These are: The library (Chantal McCarroll), Judging (Mary Jane Edwards), Lights (Beverly Sellars), and Raffle (Dave Rosenfeld).

The group has been growing and building in the past years. This will continue with everyone's support and assistance. I hope everyone will help next year's officers with the same enthusiasm as in the last two years. It also would be nice to see a few new faces working on some of the projects. If you are interested, please contact me or the new president see below).

The nominations for next year's officers are the following:

President - Joan Rosenfeld

Vice President - Smith Freeman

Secretary - Patti Whitely

Treasurer - Ed Frankel

If anyone is interested in any of these positions (including treasurer) see me before the election at the May meeting.

The May Dinner Meeting

Date - May 27, 1987

Time - 7:00 social hour, Dinner at 8:00.

Place - Good Times Charley's

40 Main St.

Kingston, New Jersey (609) 924-7400

(Route 27, north of Princeton - Left side of road going north)

If you need specific direction please call me (609) 883-4378

If you will be attending the May meeting and have not already sent your dinner selection(s) and payment please fill out this form and mail to me. The deadline for returning these forms is May 21, 1987. If you wish to attend and your letter will not reach me by this date, please call so that arrangements may be made.

****SPECIAL RAFFLE AT MAY MEETING - TICKETS \$1.00 - LIMIT ONE TICKET PER PERSON ****

Indicate how many meals by putting the number in the blank.

___ Broiled Flounder \$17.00

___ Teriyaki Steak \$18.15

___ Chicken Gruyere \$15.75

___ Stuffed Shrimp \$19.40

___ Prime Rib (Queen Cut) \$15.75

Prices include Charley's special salad, Baked Potato, Sour cream, French Bread and Butter, Coffee or Tea, and Dessert.

Total enclosed \$ _____ (Make checks payable to the Central Jersey Orchid Society)

Name(s) _____

From the Librarian

The CJOS Library will now be available at every club meeting, as the books can be left in the Mercer County Library's storage closet.

I have contacted TWIN OAKS BOOKS and will circulate their latest book list for selection of books to be purchased.

Please keep borrowing books. Be sure to mark the 'lending book' when you return the books, as I will be sending out reminders periodically.

I also plan on getting binders for the AOS Bulletins so they are more accessible/borrowable.

Have a good summer.

Chantal McCarroll

ATTENTION*****

In the confusion of taking down plants from the last meeting, my daughter's Phal. Zauberose was missing from the show table. It's a purple phal. with a yellow Yardley Orchid tag in the pot. Please check your plants and call Ed Frankel at 883-4378 if you find it.

Thanks, Ed